

# MOHAWK

MADE IN THE USA

## TD-1000-AH Tire Dolly

1000 LB CAPACITY AIR/HYDRAULIC RAISED



- ☒ OPERATION
- ☒ MAINTENANCE
- ☒ PARTS



### MOHAWK LIFTS, LLC.

65 VROOMAN AVE., PO BOX 110  
AMSTERDAM, NY 12010

**TOLL FREE:** 1-800-833-2006

**LOCAL:** 1-518-842-1431

**FAX:** 1-518-842-1289

**INTERNET:** [www.MOHAWKLIFTS.com](http://www.MOHAWKLIFTS.com)

**E-MAIL:** [service@MOHAWKLIFTS.com](mailto:service@MOHAWKLIFTS.com)

TD-1000-AH 7-2010.doc

Rev Date 7/2010

Part #601-800-0XX

**READ MANUAL  
THOROUGHLY BEFORE  
INSTALLING,  
OPERATING OR SERVICING  
THIS LIFT !!**

**Deliver these instructions to lift  
owner/user/employer along with  
other instructional materials  
furnished with this lift.**

HAVE A QUESTION?

**Call your local  
Mohawk distributor  
For parts, service and technical support.**

Distributor Place Card Here

Please have this unit's model and serial number when calling for service.

Model Number

\_\_\_\_\_

Serial Number

\_\_\_\_\_

**OR CONTACT:**

**MOHAWK LIFTS, LLC.**

65 Vrooman Ave.

P.O. Box 110

Amsterdam, NY 12010

Toll Free: 1-800-833-2006

Local: 1-518-842-1431

Fax: 1-518-842-1289

Internet: [www.MOHAWKLIFTS.com](http://www.MOHAWKLIFTS.com)

E-Mail: [Service@MOHAWKLIFTS.com](mailto:Service@MOHAWKLIFTS.com)

## **SAFETY WARNINGS FOR TIRE DOLLIES:**

**WARNING: DO NOT LOAD THIS WHEEL DOLLY BEYOND ITS RATED CAPACITY. OVERLOADING CAN CAUSE DAMAGE TO OR FAILURE OF THE PRODUCT. APPLY LOAD AS CLOSE TO THE VERTICAL PORTION OF THE LIFTING MEMBER AS POSSIBLE. BEFORE MOVING THE LOAD, LOWER THE LIFTING ARMS AND ASSURE THAT THE LOAD IS CENTERED AND SECURED WITH A LOAD RESTRAINT DEVICE.**

**THIS WHEEL DOLLY IS DESIGNED FOR USE ONLY ON HARD LEVEL SURFACES CAPABLE OF SUSTAINING THE LOAD. USE ON OTHER THAN HARD LEVEL SURFACES CAN CAUSE INSTABILITY AND POSSIBLE LOSS OF LOAD.**

**FAILURE TO HEED THESE WARNINGS MAY RESULT IN LOSS OF LOAD, DAMAGE TO THE WHEEL DOLLY, AND/OR FAILURE RESULTING IN PERSONAL INJURY OR PROPERTY DAMAGE.**

**NO ALTERATIONS TO THE WHEEL DOLLY SHALL BE MADE.**

**STUDY, UNDERSTAND, AND FOLLOW ALL INSTRUCTIONS.**

# **MOHAWK**

## **TD-1000-AH**

### **INSTRUCTIONS & DIAGRAMS**

**MOHAWK LIFTS, LLC.**

# MOHAWK TD-1000-AH

## 1/2 TON CAPACITY AIR/HYD. HIGH LIFT WHEEL DOLLY SETUP • OPERATING • MAINTENANCE INSTRUCTIONS



This is the safety alert symbol. It is used to alert you to potential personal injury hazards. Obey all safety messages that follow this symbol to avoid possible injury or death.



WARNING indicates a hazardous situation which, if not avoided, could result in death or serious injury.



### IMPORTANT: READ THESE INSTRUCTIONS BEFORE OPERATING

BEFORE USING THIS DEVICE, READ THIS MANUAL COMPLETELY AND THOROUGHLY, UNDERSTAND ITS OPERATING PROCEDURES, SAFETY WARNINGS AND MAINTENANCE REQUIREMENTS.

It is the responsibility of the owner to make sure all personnel read this manual prior to using the device. It is also the responsibility of the device owner to keep this manual intact and in a convenient location for all to see and read. If the manual is lost or not legible, contact Mohawk for a free replacement. If the operator is not fluent in English, the product and safety instructions shall be read to and discussed with the operator in the operator's native language by the purchaser/owner or his designee, making sure that the operator comprehends its contents.

### THE NATURE OF HAZARDOUS SITUATIONS



The use of portable automotive lifting devices is subject to certain hazards that cannot be prevented by mechanical means, but only by the exercise of intelligence, care, and common sense. It is therefore essential to have owners and personnel involved in the use and operation of equipment who are careful, competent, trained, and qualified in the safe operation of the equipment and its proper use. Examples of hazards are dropping, tipping or slipping of loads caused primarily by improperly securing loads, overloading, off-centered loads, use on other than hard level surfaces, and using equipment for a purpose for which it was not designed.

### METHODS TO AVOID HAZARDOUS SITUATIONS



- Inspect the wheel dolly before each use. Do not use the wheel dolly if it is damaged, altered, modified or in poor condition, leaking hydraulic fluid, or has loose or missing hardware or components. Take corrective action before using the wheel dolly.
- Do not exceed rated capacity. Use only on a hard level surface.
- Stay out from underneath a load that is being lifted or suspended.
- Apply load as close to the vertical portion of the lifting member as possible.
- Before moving the load, assure that the load is centered and secured with the load restraint provided.
- Before moving, lower the load to the lowest possible point.
- No alterations or modifications shall be made to this product.

### CONSEQUENCES OF NOT AVOIDING HAZARDOUS SITUATIONS

**WARNING** Failure to read this manual completely and thoroughly, understand its OPERATING INSTRUCTIONS, SAFETY WARNINGS, MAINTENANCE INSTRUCTIONS and not comply with them, and neglecting the METHODS TO AVOID HAZARDOUS SITUATIONS could cause accidents resulting in serious or fatal personal injury and/or property damage.

## SETUP

1. Insert the large diameter end of the jack handle into the pump handle receiver and secure the handle to the receiver with the washer and bolt provided.
2. Sometimes air gets trapped in the hydraulic bottle jacks causing the jack ram to extend in sporadic increments instead of one smooth extension.

### PURGING AIR FROM THE MANUAL PUMP SYSTEM

- a. Open the release valve by turning the release valve knob in a counterclockwise direction two full turns.
- b. Pump the handle ten full strokes.
- c. Close the release valve by turning the release valve knob in a clockwise direction until tight.
- d. Pump the jack until the ram is extended to maximum height.  
If the condition seems better but is still detectable, repeat steps "a" through "d" until air is purged from the system.



---

## OPERATING INSTRUCTIONS



This is the safety alert symbol used for the OPERATING INSTRUCTIONS section of this manual to alert you to potential personal injury hazards. Obey all instructions to avoid possible injury or death.

1. Hydraulic bottle jacks are used on every model wheel dolly. Become familiar with the operation of the bottle jack. The jack's release valve knob must be turned in a clockwise direction until tight before the jack can be pumped. Turning the release valve knob very slowly in a counterclockwise direction lowers the load in a safe controlled manner. There should never be a reason to turn the release valve knob in a counterclockwise direction more than two full turns. The bottle jack tilts the lift arms in order to match the angle of the spindle.
2. **IMPORTANT:** Become familiar with the pedal operation of the air/hydraulic foot pump before using the wheel dolly under load. Depressing the foot pedal end marked "Pump" raises the lift arms. To raise the arms a small distance it is necessary to use incremental taps of your foot on the foot pedal until the arms reach the desired height. Lowering the arms is accomplished by depressing the foot pedal end marked "Release". The pump is equipped with a two speed release mechanism. Gently depressing the foot pedal end marked "Release" lowers the arms slower than if you depress the pedal all the way down. If you want to lower the load slower than the slow speed release, use gentle incremental taps of your foot on the "Release" pedal.
3. After the vehicle is raised and correctly blocked, push the wheel dolly in towards the tire/wheel combination to be lifted. The wheel dolly lift arms should straddle the tire and the side wall of the tire should be as close as possible to the vertical portion of the lift member. Raise the lift arms to meet the tire/s and adjust the lift arm angles so the arms are in full contact with tire/s. If the lift arms are not exactly centered on the tire/wheel, rotating the side shift knob clockwise will adjust the lift arms right and counterclockwise will shift them left.
4. Secure the tire/wheel combination to the dolly with the safety restraint chain provided. Wrap the chain around the tire and secure the chain hook or chain loop to the dolly.
5. Continue to lift the tire/wheel combination until the entire weight is supported by the dolly lift arms. Back the dolly away to remove the tire/wheel combination.
6. Slowly lower the load to the ground or desired work height. Never raise, lower or transport a load without the safety restraint chain securing the load.

---

## PREVENTATIVE MAINTENANCE



This is the safety alert symbol used for the PREVENTATIVE MAINTENANCE section of this manual to alert you to potential personal injury hazards. Obey all instructions to avoid possible injury or death.

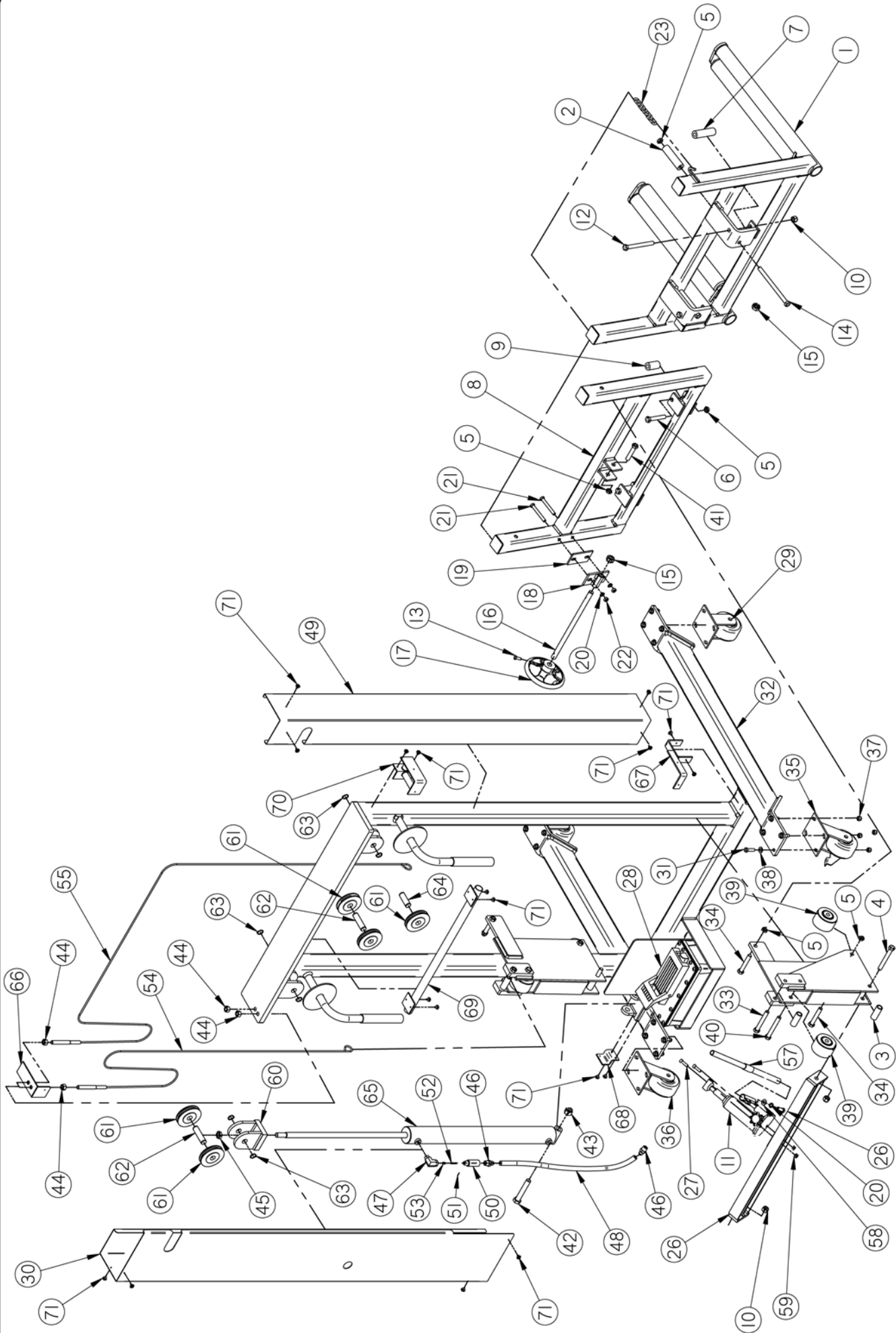
1. Always store the wheel dolly in a well protected area where it will not be exposed to inclement weather, corrosive vapors, abrasive dust, or any other harmful elements. The wheel dolly must be cleaned of water, snow, sand, or grit before using.
2. Lubricate moving parts once a month with a general purpose grease.
3. It should not be necessary to refill or top off the reservoir with hydraulic fluid unless there is an external leak. An external leak requires immediate repair which must be performed in a dirt-free environment by qualified hydraulic repair personnel who are familiar with this equipment. Mohawk Authorized Service Centers are recommended. **IMPORTANT: In order to prevent seal damage and hydraulic failure, never use alcohol, hydraulic brake fluid, or transmission oil in the hydraulic system.**
4. Every wheel dolly owner is responsible for keeping the dolly label clean and readable. Use a mild soap solution to wash external surfaces of the dolly but not any moving hydraulic components. Contact Norco Industries for a replacement label if your dolly label is unreadable.
5. Inspect the wheel dolly before each use. Do not use the dolly if any component is cracked, broken, bent, shows signs of damage, or leaks hydraulic fluid. Do not use the dolly if it has loose or missing hardware or components, or is modified in any way. Take corrective action before using the dolly again.
6. Do not attempt to make any hydraulic repairs unless you are a qualified hydraulic repair person that is familiar with this equipment.

---

## REPAIR SERVICE

If your product requires service or repair, contact the Mohawk for the location of the nearest Mohawk Authorized Service Center.

It will be necessary to provide the Mohawk Authorized Service Center with a copy of the bill of sale if requesting warranty repair. If the authorized service center determines your product is eligible for warranty repair, the repair will be made at no charge and returned freight prepaid. The cost of non-warrantable service, repair, and return freight is the customer's responsibility.



| DESCRIPTION           |
|-----------------------|
| HIGH LIFT WHEEL DOLLY |

| CAPACITY |
|----------|
| 1/2 TON  |

| REPLACEMENT PARTS |
|-------------------|
|-------------------|

| INDEX NO. | DESCRIPTION   | PART NO. | REQ'D NO. |
|-----------|---|----------|-----------|
| 1         | CRADLE ASSEMBLY                                     | 430230   | 1         |
| 2         | LONG GUIDE ROLLER                                   | 430231   | 2         |
| 3         | CABLE SPACER  | 430173   | 4         |
| 4         | 1/2"-13 x 4.00" LONG HEX HEAD BOLT, GRADE 5         | 11238    | 2         |
| 5         | 1/2"-13 SHORT NYLOCK NUT                            | 479210   | 9         |
| 6         | 1/2"-13 x 3.00" LONG HEX HEAD BOLT                  | 11048    | 2         |
| 7         | MEDIUM GUIDE ROLLER                                 | 430233   | 2         |
| 8         | GRADE SUPPORT ASSEMBLY                              | 430225   | 1         |
| 9         | SHORT GUIDE ROLLER                                  | 430232   | 2         |
| 10        | 1/2"-13 NYLOCK NUT                                  | 1056     | 4         |
| 11        | 2 TON CAPACITY BOTTLE JACK                          | 430170   | 1         |
| 12        | 1/2"-13 UNC x 5.00" LONG HEX HEAD BOLT              |          | 2         |
| 13        | 5/16"-18 UNC x 3/4" LONG HEX HEAD BOLT              |          | 1         |
| 14        | 1/2"-13 UNC x 7.00" LONG HEX HEAD BOLT              | 11101    | 2         |
| 15        | 5/8"-11 SLOTTED NUT                                 | 1098     | 2         |
| 16        | 5/8"-11 UNC THREADED ROD                            |          | 1         |
| 17        | HANDLE  |          | 1         |
| 18        | THREADED ADJUSTMENT BRACKET                         | 430302   | 1         |
| 19        | SPACER PLATE  | 430301   | 1         |
| 20        | 3/8" SPLIT LOCK WASHER                              | 2007     | 3         |
| 21        | 3/8-16 x 2.00" LONG HEX HEAD BOLT                   |          | 2         |
| 22        | 3/8"-16 UNC NUT                                     | 282852   | 2         |
| 23        | CHAIN   | 430011   | 1         |
| 24        | RH LIFT ASSEMBLY                                    | 430239   | 1         |
| 25        | LH LIFT ASSEMBLY                                    | 430265   | 1         |
| 26        | JACK MOUNTING ASSEMBLY                              | 430285   | 1         |
| 27        | 5/16"-18 x UNC x 1.00" LONG INTERNAL WRENCHING BOLT | 282834   | 2         |
| 28        | AIR / HYDRAULIC FOOT PUMP                           | 910130   | 1         |
| 29        | STATIC WHEEL ASSEMBLY                               | 492020   | 2         |
| 30        | RIGHT HAND SIDE COVER                               |          | 1         |
| 31        | 3/8"-16 x 1 1/4" LONG HEX HEAD BOLT                 |          | 16        |
| 32        | UPRIGHT BASE ASSEMBLY                               | 430305   | 1         |
| 33        | 1/2"-13 x 3 1/2" LONG HEX HEAD BOLT, GRADE 8        |          | 2         |
| 34        | 1/2"-13 x 3.00" LONG HEX HEAD BOLT, GRADE 8         |          | 4         |
| 35        | SWIVEL CASTOR WITH LOCK                             | 492015   | 1         |
| 36        | SWIVEL CASTOR                                       | 430083   | 1         |

| INDEX NO. | DESCRIPTION                                      | PART NO. | REQ'D NO. |
|-----------|--|----------|-----------|
| 37        | 3/8"-16 NYLOCK NUT                               | 1054     | 16        |
| 38        | FLAT WASHER (.82" O.D. X .40" I.D. X .08" THICK) | 2073     | 16        |
| 39        | BEARING WHEEL                                    | 430172   | 4         |
| 40        | 1/2"-13 x 3 3/4" LONG HEX HEAD BOLT, GRADE 5     |          | 2         |
| 41        | 1/2"-13 x 2 1/2" LONG HEX HEAD BOLT, GRADE 8     |          | 1         |
| 42        | 5/8"-11 x 3 3/4" LONG HEX HEAD BOLT, GR. 5       | 11171    | 1         |
| 43        | 5/8"-11 NYLOCK NUT                               | 1098     | 1         |
| 44        | 1/2"-13 UNC NUT                                  | 1013     | 4         |
| 45        | 5/8"-11 UNC NUT                                  | 1077     | 1         |
| 46        | 37 DEGREE FLARE FITTING                          | 430307   | 2         |
| 47        | STREET ELBOW 3/8" NPTF                           | 430306   | 1         |
| 48        | HYDRAULIC HOSE ASSEMBLY                          | 430315   | 1         |
| 49        | LEFT HAND SIDE COVER                             |          | 1         |
| 50        | VELOCITY FUSE BODY                               | 284121   | 1         |
| 51        | PIN (1/16" O.D. x 1/2" LONG)                     | 7063     | 1         |
| 52        | VELOCITY FUSE SPRING                             | 793366   | 1         |
| 53        | VELOCITY FUSE VALVE                              | 430339   | 1         |
| 54        | SHORT CABLE ASSEMBLY                             | 430290   | 1         |
| 55        | LONG CABLE ASSEMBLY                              | 430325   | 1         |
| 56        | 3/8"-16 x 1.00" LONG HEX HEAD BOLT               | 282868   | 1         |
| 57        | HANDLE ASSEMBLY                                  | 430310   | 1         |
| 58        | FLAT WASHER (.82" O.D. x .40" I.D. x .05" THICK) |          | 1         |
| 59        | 5/16"-18 UNC NYLOCK NUT                          |          | 2         |
| 60        | PULLEY CLEVIS                                    | 430303   | 1         |
| 61        | PULLEY   | 430304   | 5         |
| 62        | LONG PULLEY PIN                                  | 430329   | 2         |
| 63        | .69 I.D. RETAINING CLIP                          | 12027    | 6         |
| 64        | SHORT PULLEY PIN                                 | 430327   | 1         |
| 65        | RAM ASSEMBLY                                     | 430295   | 1         |
| 66        | RAM SIDE UPPER COVER MOUNTING BRACKET            |          | 1         |
| 67        | LOWER COVER MOUNTING BRACKET                     |          | 1         |
| 68        | RAM SIDE LOWER COVER MOUNTING PLATE              |          | 1         |
| 69        | WIRE GUARD ASSEMBLY                              |          | 1         |
| 70        | UPPER COVER MOUNTING BRACKET                     |          | 1         |
| 71        | SHEET METAL SCREW                                |          | 18        |

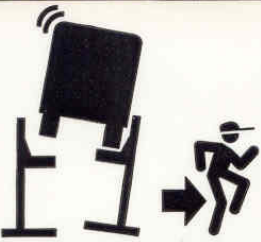
REPLACEMENT  
PARTS

CAPACITY  
1/2 TON

DESCRIPTION  
HIGH LIFT WHEEL DOLLY



**⚠ WARNING**



Clear area if vehicle is in danger of falling.

©

**⚠ WARNING**



Remain clear of lift when raising or lowering vehicle.

©

**⚠ WARNING**



Locate lift on firm, level surface, preferably concrete.

©

**⚠ WARNING**



Be sure intended lifts are moving together evenly.

©

**⚠ WARNING**



All lifting forks must properly engage vehicle tires or supports.

©

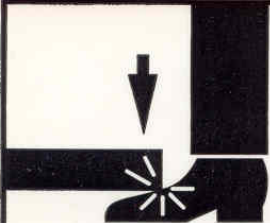
**⚠ WARNING**



Do not drive over or pinch electrical cables.

©

**⚠ WARNING**



Keep feet clear of lift while lowering.

©

The messages and pictographs shown are generic in nature and are meant to generally represent hazards common to all automotive lifts regardless of specific style.

Funding for the development and validation of these labels was provided by the Automotive Lift Institute, PO Box 33116 Indialantic, FL 32903.

They are protected by copyright. Set of labels may be obtained from ALI or its member companies.

© 1992 by ALI, Inc.

ALI/WL400w

**⚠ CAUTION**



Lift to be used by trained operator only.

©

**⚠ CAUTION**



Authorized personnel only in lift area.

©

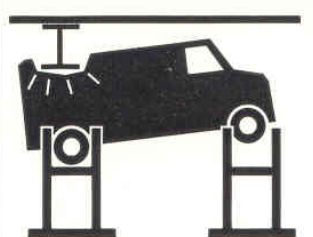
**⚠ CAUTION**



When moving lift, be careful to avoid tipping.

©

**⚠ CAUTION**



Check for overhead obstructions before raising vehicle.

©

The messages and pictographs shown are generic in nature and are meant to generally represent hazards common to all automotive lifts regardless of specific style.

Funding for the development and validation of these labels was provided by the Automotive Lift Institute, PO Box 33116 Indialantic, FL 32903.

They are protected by copyright. Set of labels may be obtained from ALI or its member companies.

© 1992 by ALI, Inc.

ALI/WL400c

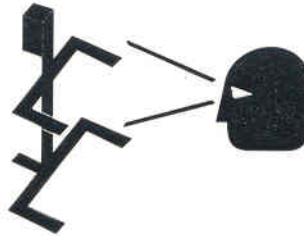
## SAFETY INSTRUCTIONS



**Read operating  
and safety manuals  
before using lift.**

©

## SAFETY INSTRUCTIONS



**Proper maintenance  
and inspection  
is necessary  
for safe operation.**

©

## SAFETY INSTRUCTIONS



**Do not operate  
a damaged lift.**

©

The messages and pictographs shown are generic in nature and are meant to generally represent hazards common to all automotive lifts regardless of specific style.

Funding for the development and validation of these labels was provided by the Automotive Lift Institute, PO Box 33116 Indialantic, FL. 32903.

They are protected by copyright. Set of labels may be obtained from ALI or its member companies.

© 1992 by ALI, Inc.

ALI/WL400a



# MOHAWK *Because Quality Lasts Forever*



Model A-7

## Model A-7

The A-7 is a 7,000 lb. capacity asymmetric lift that allows full opening of all vehicle doors as well as total undercar/underdash access, thanks to Mohawk's unique "clear floor" design. Low 4" arms accommodate all imports and low-riding sports cars. Includes both 3" and 6" adapters.

## Parallelogram Lifts

Standard models from 36,000 to 100,000 lb. capacities with track lengths from 26'-48'. Available in surface or flush mount with full under-vehicle access for all trucks, buses and heavy equipment.



Model 50-26-S



Model TP-16

## Models System I, LC-12, LMF-12, TP-16, TP-18, TP-26 & TP-30

These 10,000 to 30,000 lb. capacity models are the ideal heavy-duty lifts for up to Class VI trucks. Mohawk's unique "clear floor" design makes these the perfect lifts for all fleet applications. Truck adapters are also standard equipment.

## MP-Series Mobile Column

Mohawk's mobile columns are capable of lifting 32,000 to 240,000 lbs. All columns operate together, individually or can be divided into separate pairs. Adjustable lifting forks accommodate the widest range of vehicles. No wheel reducer sleeves needed.



Model MP-18-006



Model TR-75

## TR-Series Ramp Style Lifts

Standard models from 19,000 to 120,000 lbs. for total under-vehicle access. Available in 20', 25', and 30' long runways. Completely operated by a single technician and feature fully interlocked, redundant safety systems.



MOHAWK LIFTS, LLC. • P.O. Box 110 65  
Vrooman Ave • Amsterdam, NY 12010  
(800) 833-2006 or (518) 842-1431  
[www.mohawklifts.com](http://www.mohawklifts.com)

# MOHAWK

## MODEL TJ2000 1 TON CAPACITY UNDER HOIST TRUCK TRANSMISSION JACK SETUP • OPERATING • MAINTENANCE INSTRUCTIONS

Note: Revision letters (A, B, C, D etc.) after model numbers have been omitted as they do not affect the setup, operating and maintenance instructions of a particular jack unless otherwise noted.

### IMPORTANT: READ THESE INSTRUCTIONS BEFORE OPERATING

BEFORE USING THIS JACK, READ THIS MANUAL COMPLETELY AND THOROUGHLY, UNDERSTAND ITS OPERATING PROCEDURES, SAFETY WARNINGS AND MAINTENANCE REQUIREMENTS. FAILURE TO DO SO COULD CAUSE ACCIDENTS RESULTING IN SERIOUS OR FATAL PERSONAL INJURY AND/OR PROPERTY DAMAGE.

The use of portable automotive lifting devices is subject to certain hazards that cannot be prevented by mechanical means, but only by the exercise of intelligence, care, and common sense. It is therefore essential to have owners and personnel involved in the use and operation of equipment who are careful, competent, trained, and qualified in the safe operation of the equipment and its proper use. Examples of hazards are dropping, tipping, or slipping of motor vehicles or their components caused primarily by improperly securing loads, overloading, off-centered loads,

use on other than hard level surfaces, and using equipment for a purpose for which it was not designed.

It is the responsibility of the owner to make sure all personnel read this manual prior to using this device. It is also the responsibility of the device owner to keep this manual intact and in a convenient location for all to see and read. If the manual is lost or not legible, contact Norco Industries, Inc. for a free replacement. If the operator is not fluent in English, the product and safety instructions shall be read to and discussed with the operator in the operator's native language by the purchaser/owner or his designee, making sure that the operator comprehends its contents.

#### WARRANTY

This transmission jack is covered by a Limited Lifetime Warranty. For details see the back cover of Norco's product catalog.

### ⚠ WARNING

- Adequately support the vehicle before starting repairs. Consult the in-ground or above-ground lift manufacturer for the recommended support procedure and under hoist support stand locating points.
- Support the engine with a stand before unbolting the transmission from the engine.
- Inspect the jack before each use. Do not use the jack if it is damaged, altered, modified, in poor condition, leaking hydraulic fluid or unstable due to loose or missing hardware. Take corrective action before using the jack.
- Do not use jack beyond its rated capacity. Do not lift or support

the vehicle with this jack.

- Use only on a hard level surface.
- Be sure setup is stable and secure. Use this jack only with adapters and load restraints provided by Norco. Use of this jack is limited to the removal installation and transportation (in the lowered position) of transmissions and transfer cases. Center load on saddle. Consult the vehicle manufacturer for the transmission's center of balance. Off-center loads can cause jack failure and/or loss of load.
- No alterations shall be made to this jack and use only with factory approved adapters.

### SETUP

1. Refer to the exploded view parts drawing for identification, location and position of parts.
2. Install the swivel caster wheels on the jack legs with the washers and nuts provided.
3. Find a hard floor that is flat. Install the legs on the jack's base with the allen socket cap screws and washers provided. Do not tighten the allen socket cap screws until all four caster wheels are touching the floor and the jack appears vertical.
4. Assemble the two collar braces around the top of the jack's reservoir with the bolts, washers and nuts provided. Do not tighten.
5. Assemble the round leg brace tubes in between the ears on top of each caster mounting bracket with the bolts, washers and nuts provided. Do not tighten. The opposite ends of the round leg brace tubes should be assembled between the ears on the two collar braces with the bolts, washers and nuts provided. Align the ears on the collar braces with the ears on top of the caster mounting brackets and tighten all bolts and nuts.
6. Insert the mounting stem of the complete saddle assembly into the top of the ram and align the hole in the stem with the holes in the ram. Secure the stem to the ram with the bolt and locknut provided.

7. The chain and hook are provided in order to secure the transmission to the saddle assembly. The end of the chain should be anchored to the side of the saddle. The restraint system (chain and hook assembly) may be adjusted according to the specific transmission configuration.

8. The jack is equipped with two reservoir fill plugs. Replace the shipping fill plug with the vented fill plug before operating the jack.

9. Sometimes air gets trapped in the jack during shipment. An air bound hydraulic system feels spongy when pumped and sometimes the jack will not pump full incremental strokes.

#### PURGING AIR FROM THE HYDRAULIC SYSTEM

- a. Open the release valve by depressing the "down" foot pedal. With the "down" foot pedal depressed, simultaneously activate the larger pump pedal about 15 times. It may be necessary to have one person depress the "down" pedal while another person activates the larger pump pedal.
- b. After pumping, remove your foot from the "down" foot pedal and pump the larger pump pedal until the jack is raised to maximum extension.
- c. If the condition seems better, repeat steps "a" and "b" until air is purged from the system.



## OPERATING INSTRUCTIONS

1. Lift the vehicle to the desired work height and support the vehicle in accordance with the lift manufacturer's recommended support procedure and the warnings given in this manual.
2. Use an under hoist stand rated greater than the weight of the engine to support the engine before unbolting the transmission from the engine.
3. Position the transmission jack directly under the transmission. Depress the large foot pedal up and down in order to raise the saddle to a height very close to the center of balance point of the transmission but do not touch the transmission.
4. Loosen the four bolts that secure the four extension arms to the saddle. The extension arms are formed in an "L" so that one arm of the "L" is longer than the other. The extension arms can be adjusted in and out to help position the transmission on the saddle. You must determine whether you want to use the long or short arm of the "L" shaped extension arms. Now gently raise the saddle so it supports the transmission. Adjust the four extension arms in position against the transmission and tighten the four bolts that secure the arms to the saddle. Fore and aft saddle tilt adjustments are sometimes necessary to properly position the transmission on the saddle. Side to side tilt positioning may be necessary for the same reason and can be accomplished by activating the side to side tilt knob.
5. The hook end of the chain should be pulled over the center of balance portion of the transmission and secured to the saddle base. Rotate the hook adjustment to take up the slack in the chain and secure the transmission to the saddle.
6. Remove the transmission from the engine according to instructions in the vehicle service manual.
7. Once the transmission has been disconnected from the engine, very slowly depress the "down" foot pedal to make sure the jack's saddle and transmission do not hang up on any undertruck components, wiring, fuel lines, etc. Continue to lower the jack all the way down.

---

## PREVENTATIVE MAINTENANCE

1. Always store the jack in a well protected area where it will not be exposed to inclement weather, corrosive vapors, abrasive dust, or any other harmful elements. The jack must be cleaned of water, snow, sand, or grit before using.
2. Lubricate moving parts once a month with a general purpose grease.
3. It should not be necessary to refill or top off the reservoir with hydraulic fluid unless there is an external leak. An external leak requires immediate repair which must be performed in a dirt-free environment by qualified hydraulic repair personnel who are familiar with this equipment. Norco Authorized Service Centers are recommended. **IMPORTANT: In order to prevent seal damage and jack failure, never use alcohol, hydraulic brake fluid, or transmission oil in the jack.**
4. Every jack owner is responsible for keeping the jack label clean and readable. Use a mild soap solution to wash external surfaces of the jack but not any moving hydraulic components. Contact Norco Industries for a replacement label if your jack's label is unreadable.
5. Inspect the jack before each use. Do not use the jack if any component is cracked, broken, bent, shows sign of damage, or leaks hydraulic fluid. Do not use the jack if it has loose or missing hardware or components, or is modified in any way. Take corrective action before using the jack again.
6. Do not attempt to make any hydraulic repairs unless you are a qualified hydraulic repair person that is familiar with this equipment.



# MOHAWK LIFT PRODUCTS

## The Lifts You Can't Wear Out



**TWO POST**

Model System IA-10



Model TP-20



**FOUR POST**

Model TR-75



**MOBILE COLUMN**

Model MP-18-007



**PARALLELOGRAM**

Model 75-32-F



**VERTICAL RISE**

Model V-77-30S

# MOHAWK LIFTS

**Mohawk Lifts, LLC.**

P.O. Box 110 • 65 Vrooman Ave

Amsterdam, NY 12010

Phone: (800) 833-2006 • (518) 842-1431

**[www.mohawklifts.com](http://www.mohawklifts.com)**